



**RES  
PHARMA**  
INNOVATIVE INGREDIENTS

# Emulpharma COREOSOME<sup>®</sup>

SENSORY NATURAL EMULSIFIER



# EMULPHARMA COREOSOME

*Cetearyl Alcohol, Glyceryl Stearate, Sorbitan Stearate, Cetearyl Glucoside*



## 100% NATURAL ROBUST PRIMARY O/W EMULSIFIER FOR HIGHLY PERFORMING PRODUCTS

Emulpharma® COREOSOME is a 100% primary sensory natural emulsifier, having multifunctional activity. Emulpharma® COREOSOME is a well-balanced waxy base used to create advanced liquid crystal lamellar structure systems (oleosome). Emulpharma® COREOSOME works as an active ingredient and provides intrinsic long lasting moisturizing efficacy. Emulpharma® COREOSOME builds a thick wall around oils and this structure provides a double property effect: reservoir of moisturizing effect and highly stable o/w emulsion.

Compatible with all oils of different polarities  
High stable emulsions  
Good Performance in a wide pH range  
(4.00-9.00)

## THE "COREOSOME" ACTIVE O/W EMULSIFIER: PROVIDES SKIN - MIMETIC EMULSION FOR UNIQUE PERFORMANCE AND SENSORIALITY

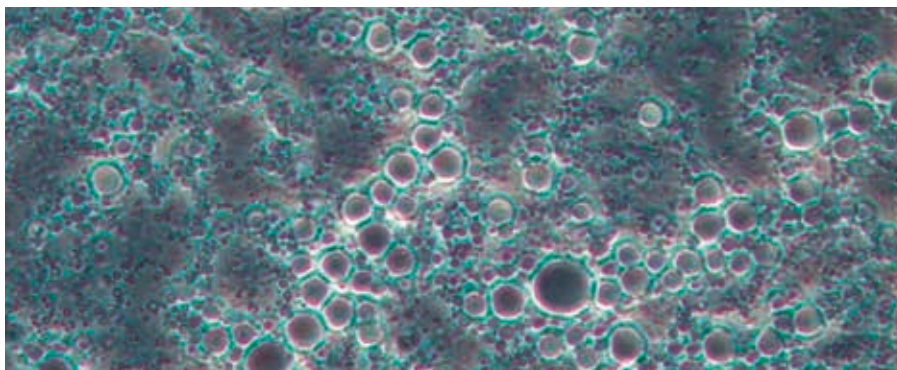
PROMOTES SKIN SOFTNESS  
PROVIDES A WELL-DEFINED CREAMY SENSORIALITY

## EMULPHARMA COREOSOME IS THE IDEAL EMULSIFIER TO DEVELOP:

- 👉 CLEANSING MILK
- 👉 ANTIPERSPIRANTS
- 👉 HAIR LIGHTENERS
- 👉 MAKE UP FORMULATIONS
- 👉 CICA CREAMS
- 👉 BB AND CC CREAMS
- 👉 SUNSCREEN PRODUCTS

# SENSORY COSMOS EMULSIFIER

Emulpharma® COREOSOME is an extremely powerful emulsifier. Its HLB is around 9.50. At 5.00% concentration it can emulsify up to 15.00% of oil phase.



Leica DM 1000 - 100x

## HOW TO USE Emulpharma® COREOSOME

Emulpharma® COREOSOME will be added to oil phase:

**Warm oil phase to:** 70- 85°C.

**Warm aqueous phase to:** 70-85°C.

Mix the two phases up to obtain an homogeneous system.

High shear homogenization.

**Temperature:** when temperature is 35-40°C, during cooling process, mix gently to promote oleosome structure.

18PS44 COREOSOME CREAM				
	INCI Name	%	Activity	Supplier
<b>Phase A</b>				
EMULPHARMA® COREOSOME	Cetearyl Glucoside, Sorbitan Stearate, Glyceryl Stearate, Cetearyl Alcohol	7.00	COSMOS Liquid Crystal Promoter Emulsifier	RES PHARMA INDUSTRIALE
	Cetyl Alcohol	2.00	Lipophilic Consistence Factor	RES PHARMA INDUSTRIALE
	Caprylic/Capric Triglyceride	7.00	Emollient	
	Decyl Oleate	13.00	Emollient	
<b>Phase B</b>				
	Glycerin	3.00	Humectant	
	Aqua	To 100	Solvent	
<b>Phase C</b>				
	Phenoxyethanol, Ethylhexylglycerin	1.10	Preservative	

# RES PHARMA

INNOVATIVE INGREDIENTS

RES PHARMA INDUSTRIALE SRL - Via G. Pastore, 3 - 20056 Trezzo s/Adda, Milano - ITALY  
T +39.02.90 99 41 - info@respharmaind.com - www.respharmaind.com



The data provided in this publication is based on our current knowledge and experience and is offered free of charge and in good faith for guidance only. It does not constitute a guarantee in the legal sense of the term and in view of the multiple factors that may affect processing and applications, it does not relieve those to whom we supply our products from the responsibility of carrying out their own tests and experiments. All express and implied warranties are disclaimed. Any relevant patent rights and existing legislations and regulations must be observed.